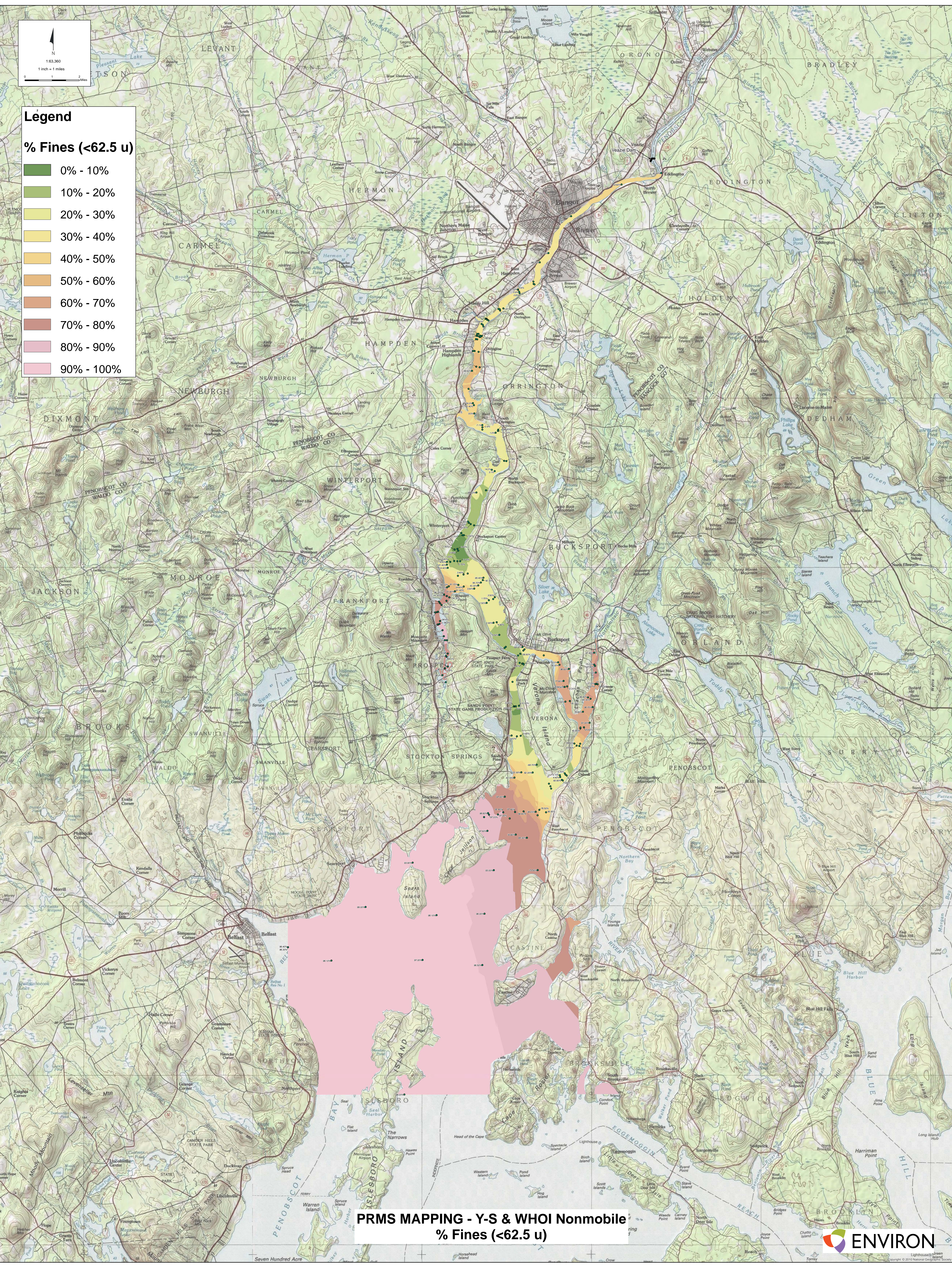
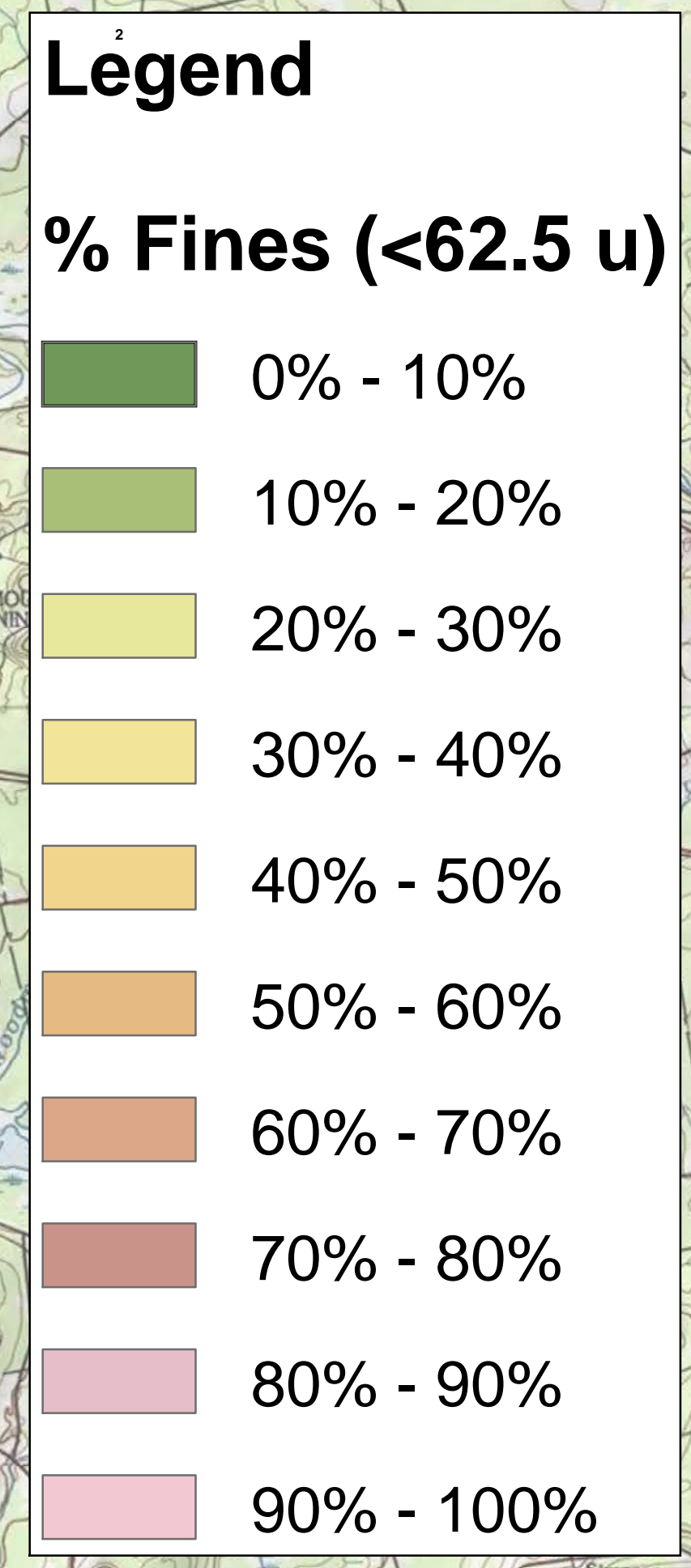
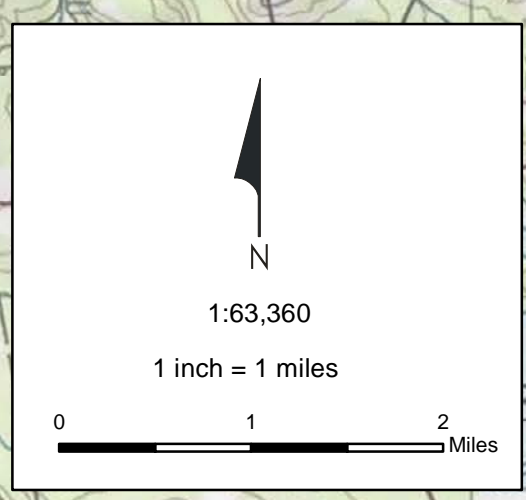
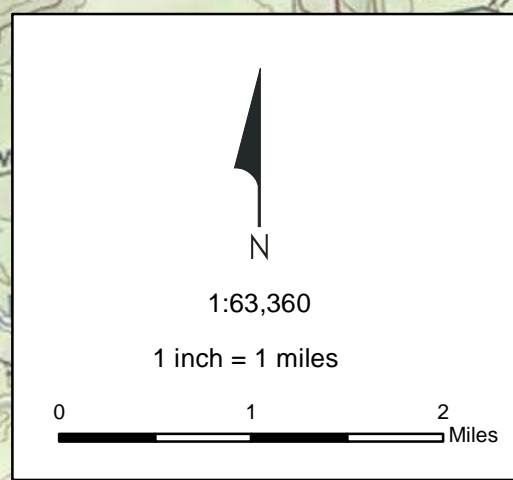


## APPENDIX 1-4

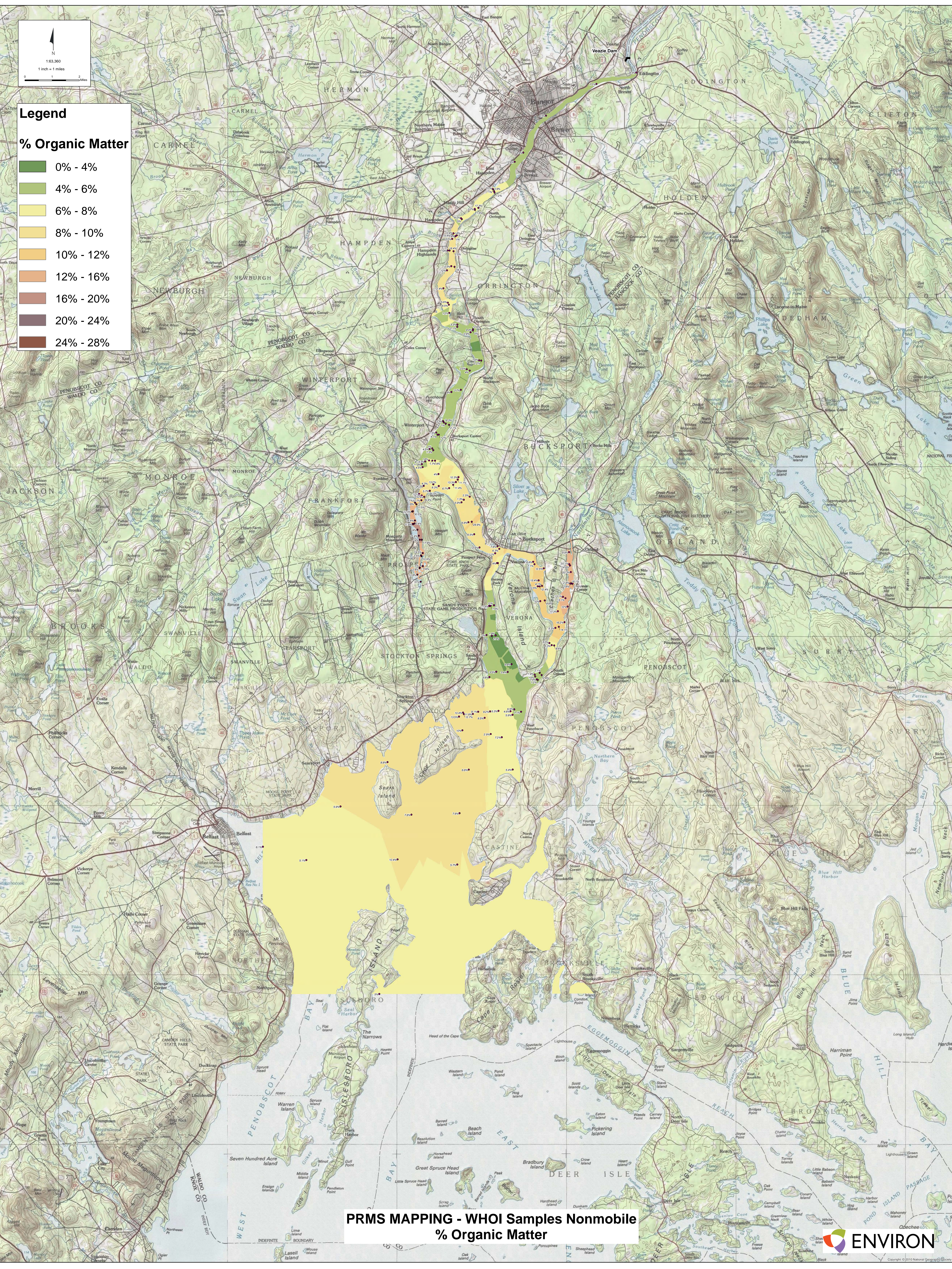
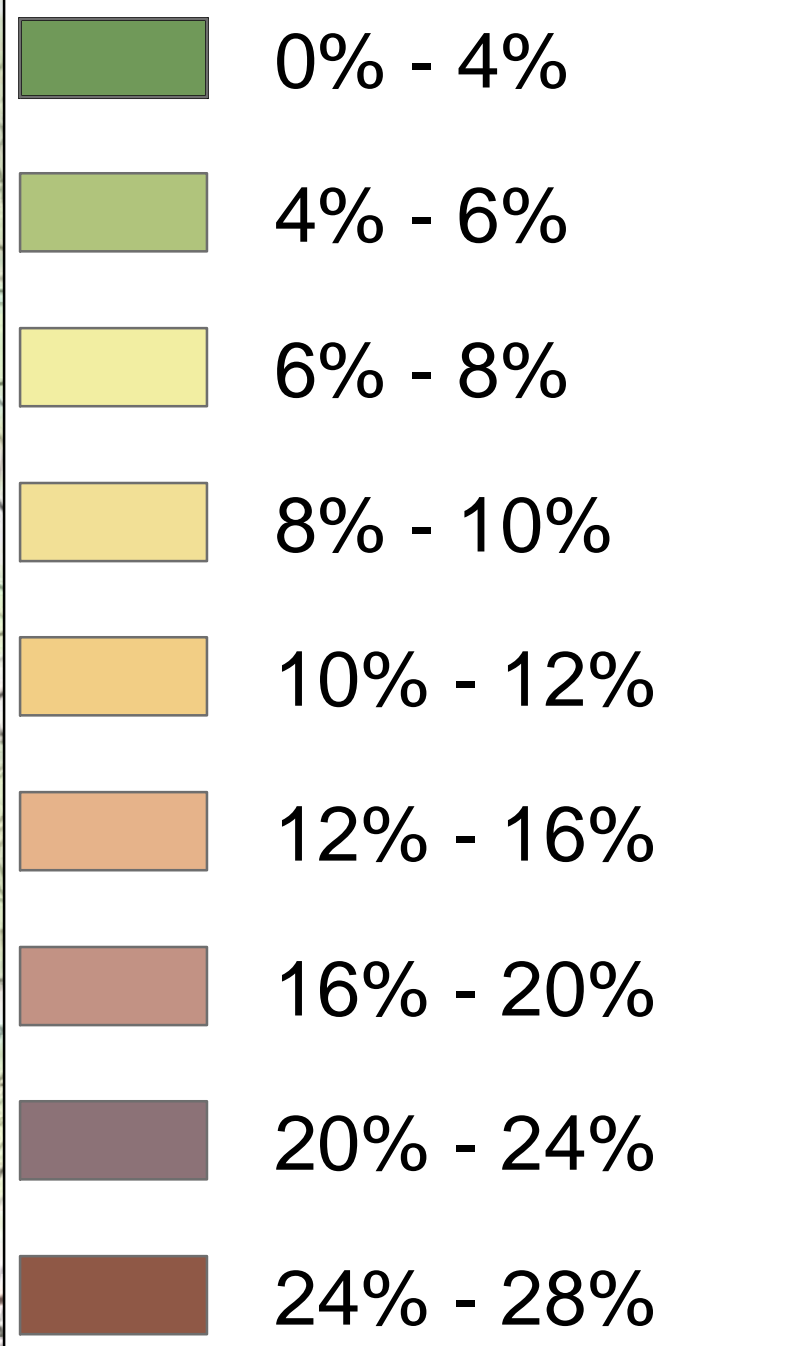


**PRMS MAPPING - Y-S & WHOI Nonmobile  
% Fines (<62.5 u)**

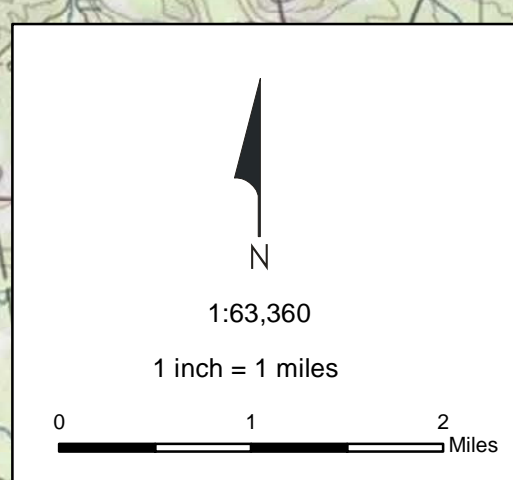


**Legend**

**% Organic Matter**



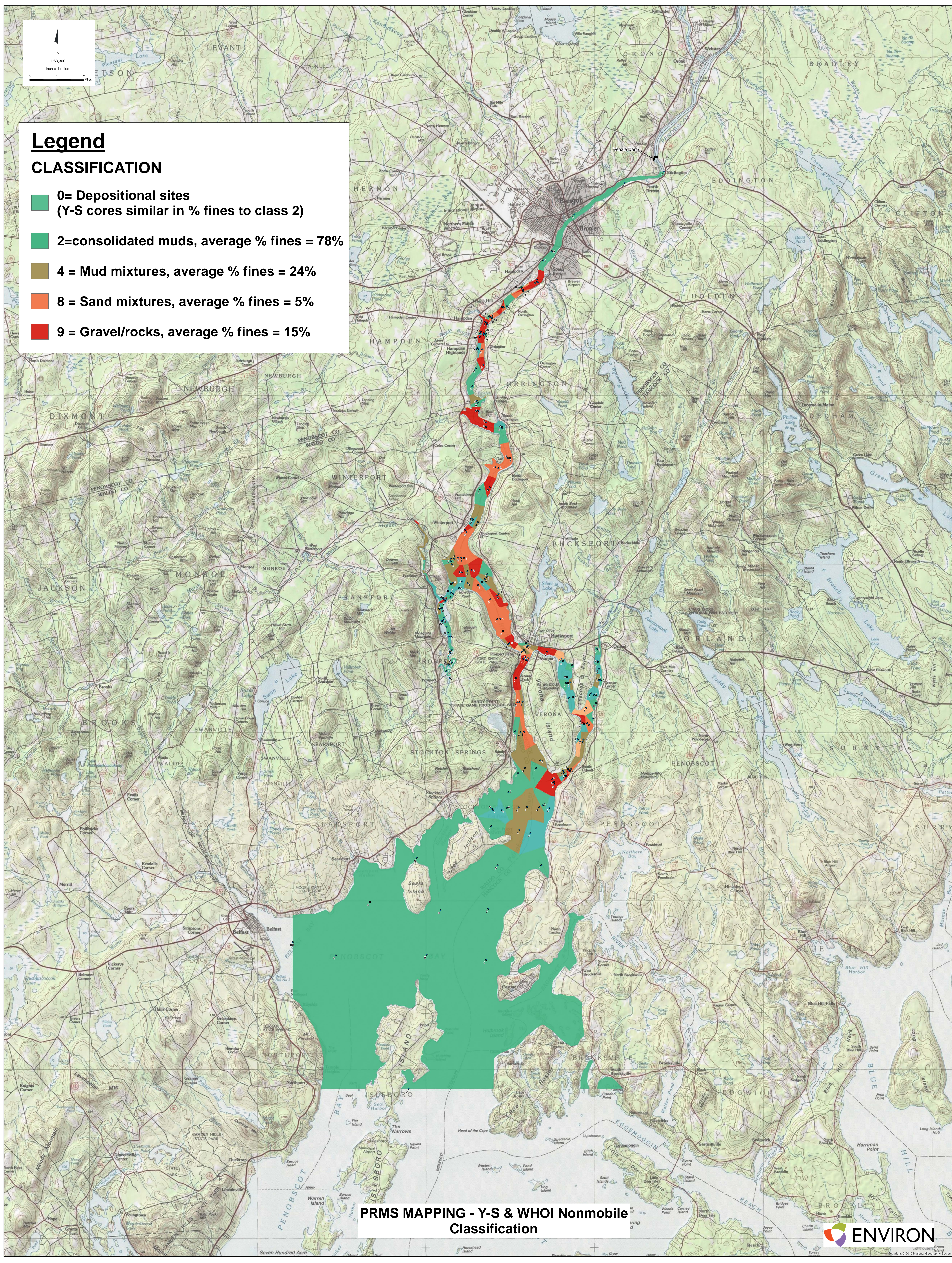
**PRMS MAPPING - WHOI Samples Nonmobile  
% Organic Matter**



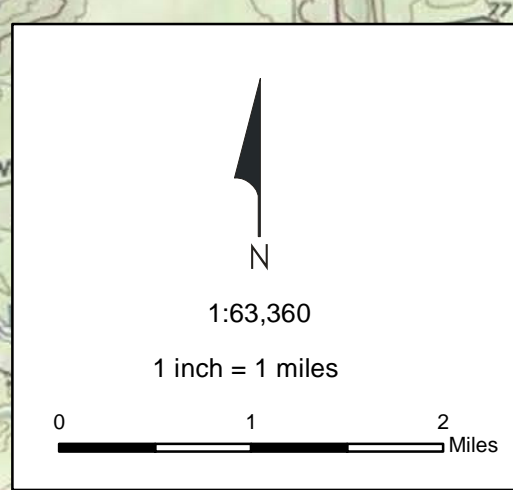
# Legend

## CLASSIFICATION

- 0= Depositional sites (Y-S cores similar in % fines to class 2)**
- 2=consolidated muds, average % fines = 78%**
- 4 = Mud mixtures, average % fines = 24%**
- 8 = Sand mixtures, average % fines = 5%**
- 9 = Gravel/rocks, average % fines = 15%**

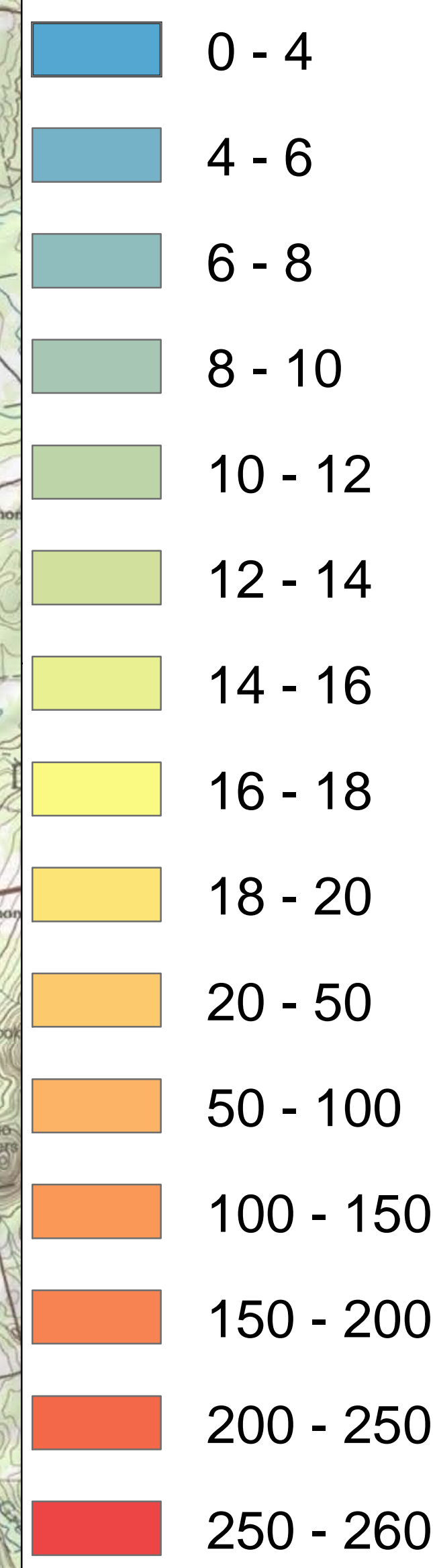


PRMS MAPPING - Y-S & WHOI Nonmobile Classification

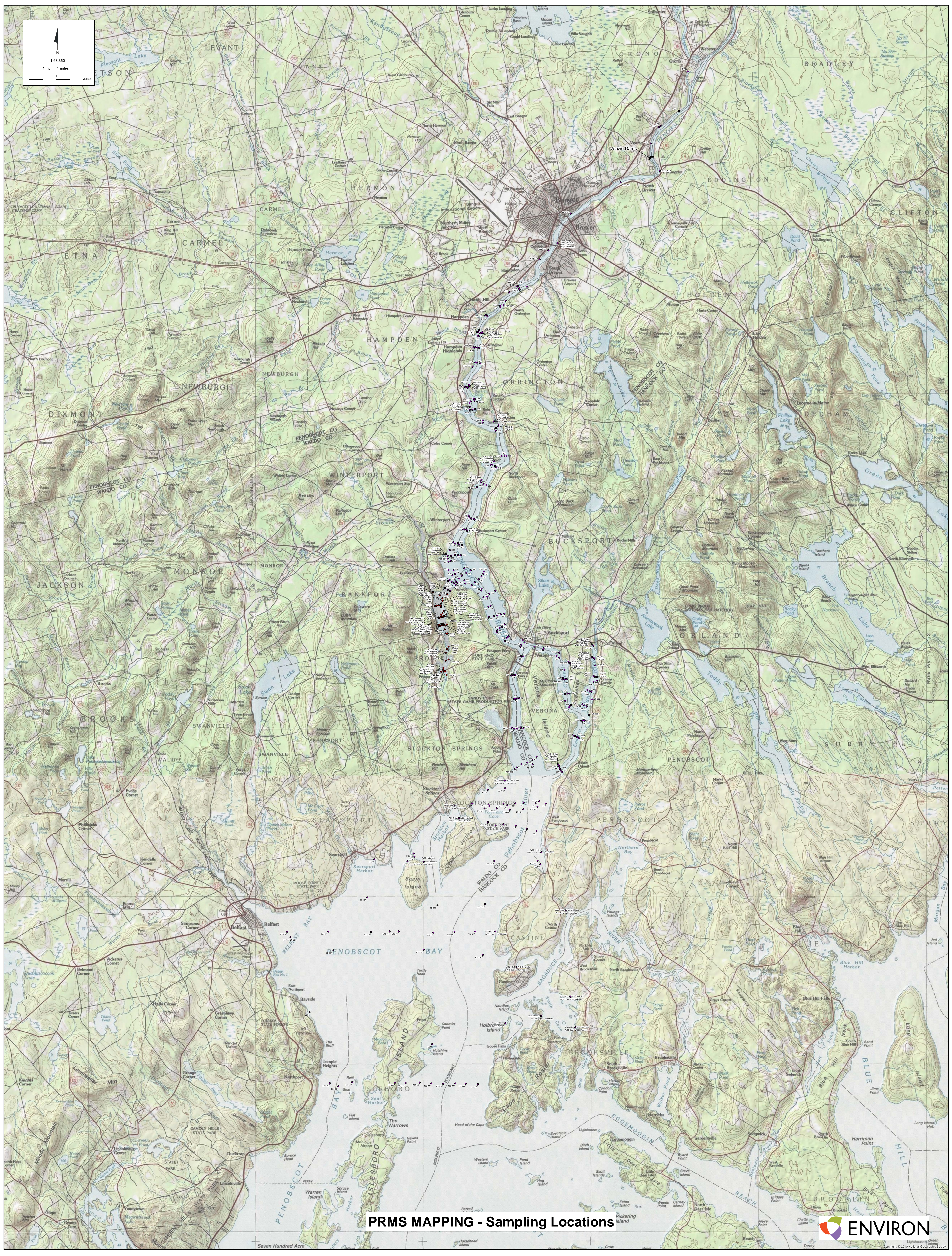
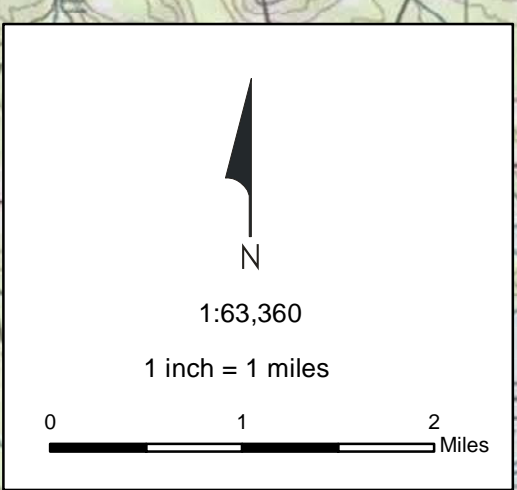


**Legend**

dpm/cm<sup>2</sup>



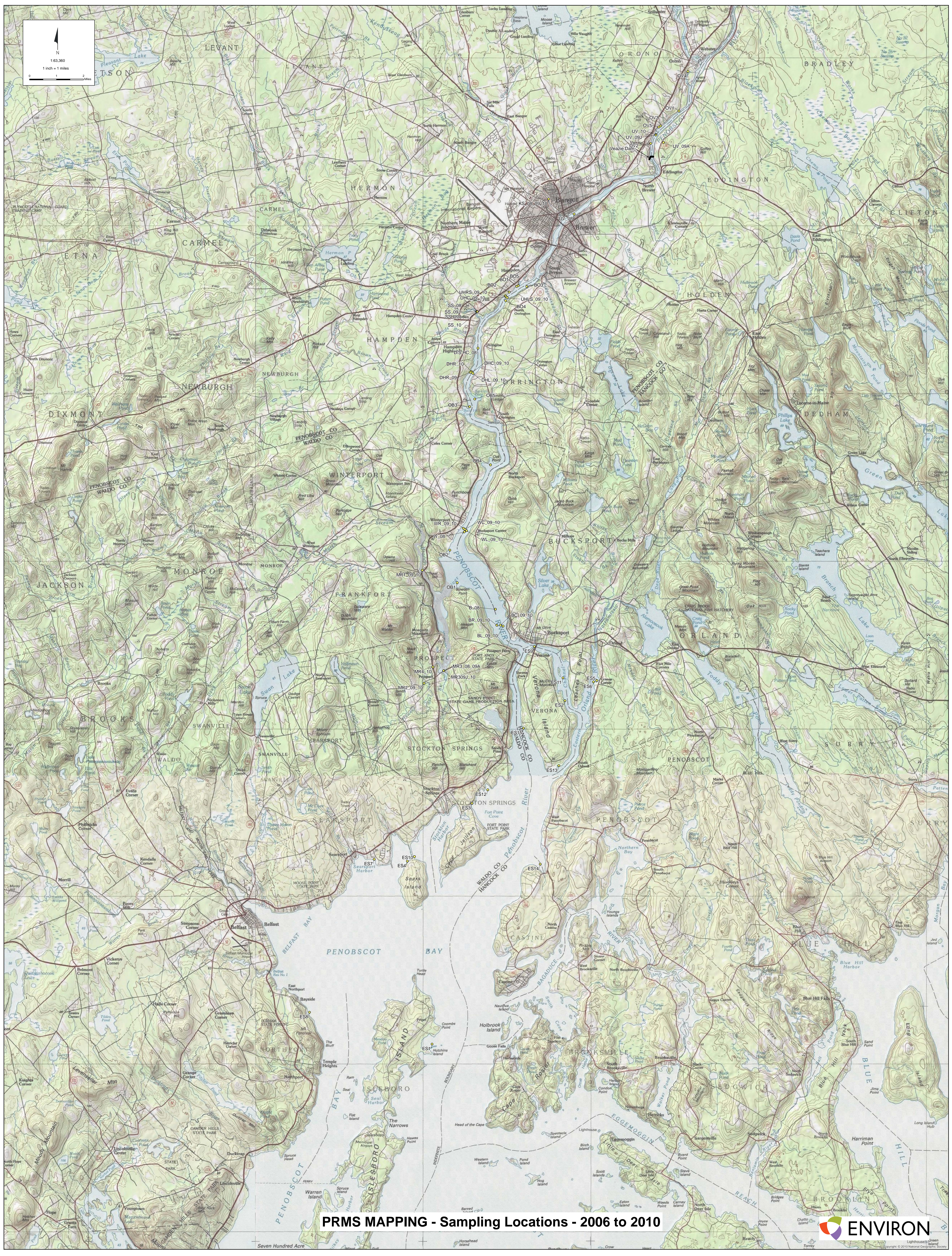
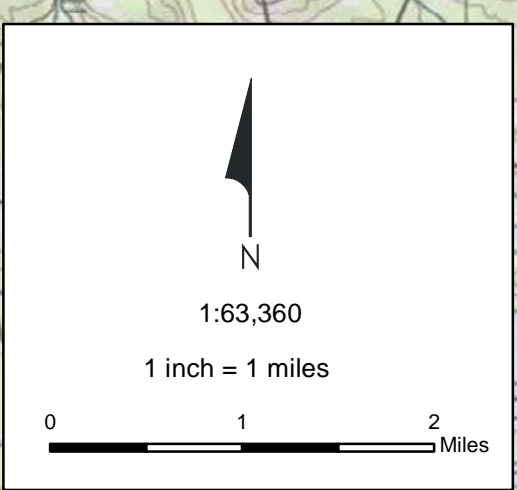
Above 10 pm/cm<sup>2</sup> indicated depositional. As for the sediment accumulation map, keep in mind that cores were taken in depositional areas and that there are areas of the channel (mid-channel where scouring occurs) that do not have deposition.



**PRMS MAPPING - Sampling Locations**



© 2010 National Geographic Society



PRMS MAPPING - Sampling Locations - 2006 to 2010



Copyright © 2010 National Geographic Society