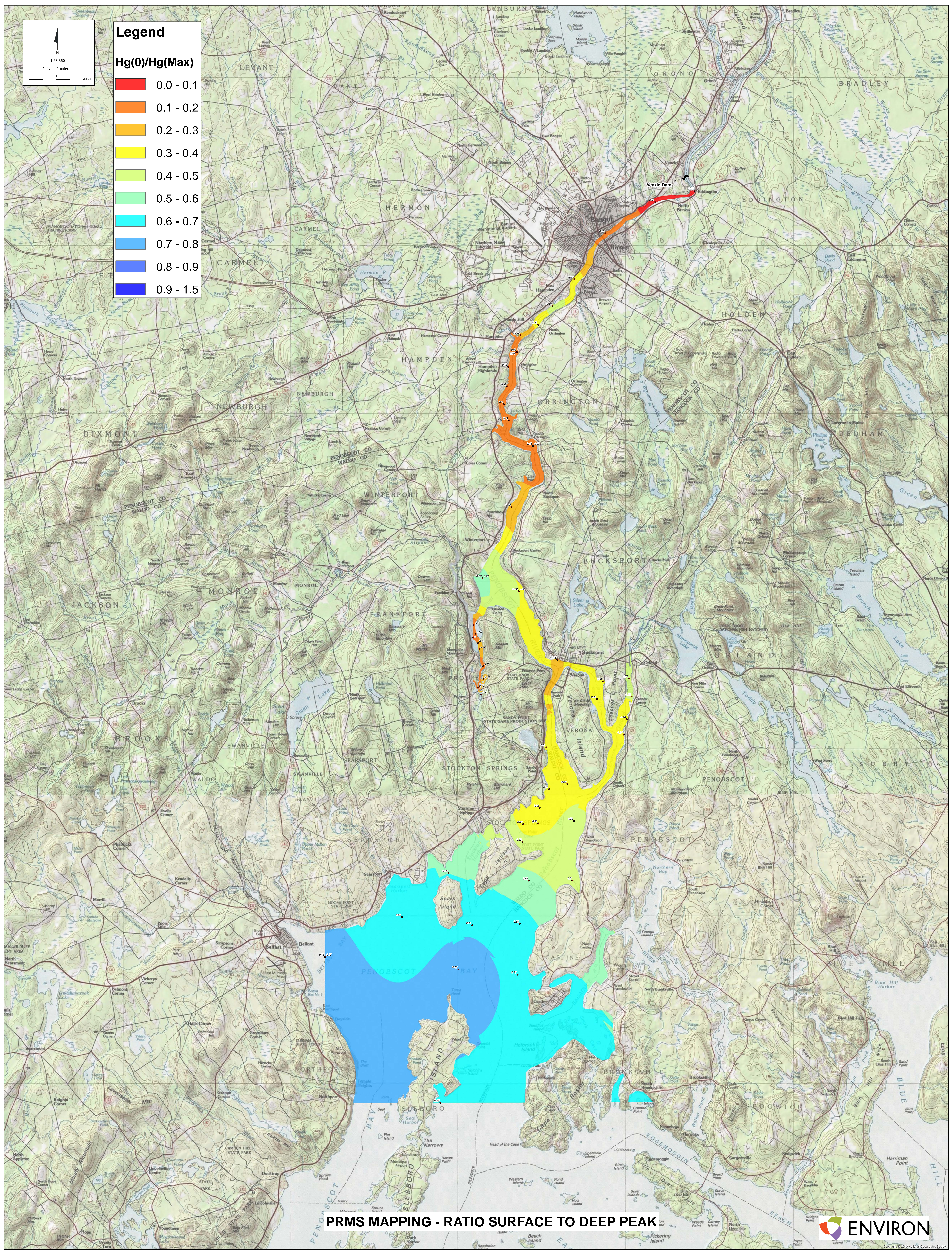
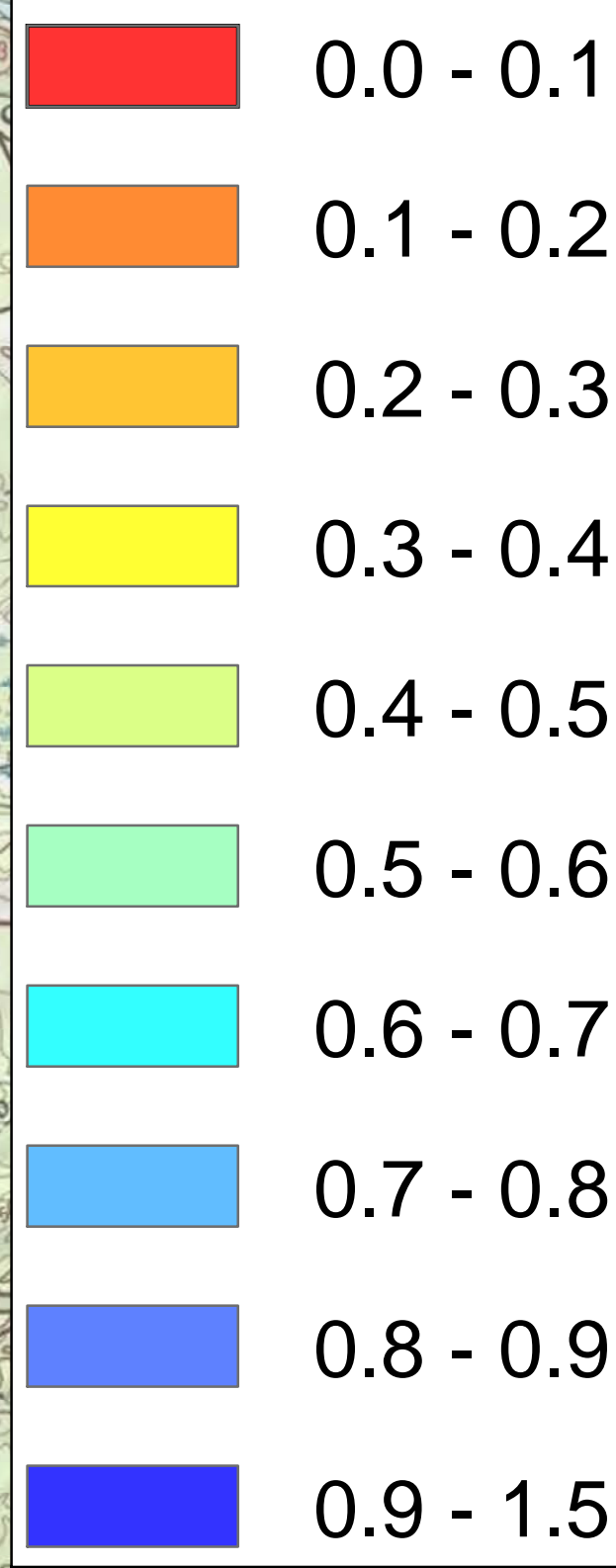


Legend

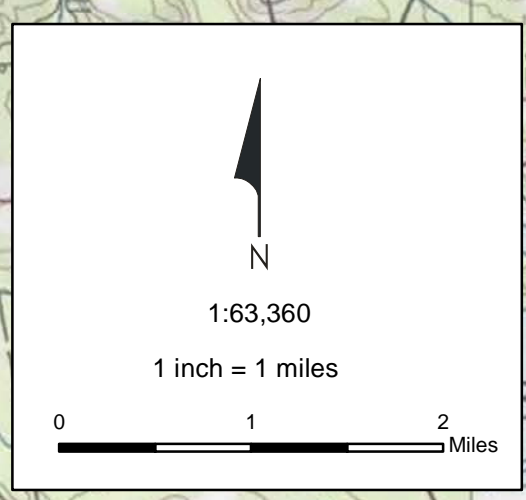
Hg(0)/Hg(Max)



PRMS MAPPING - RATIO SURFACE TO DEEP PEAK



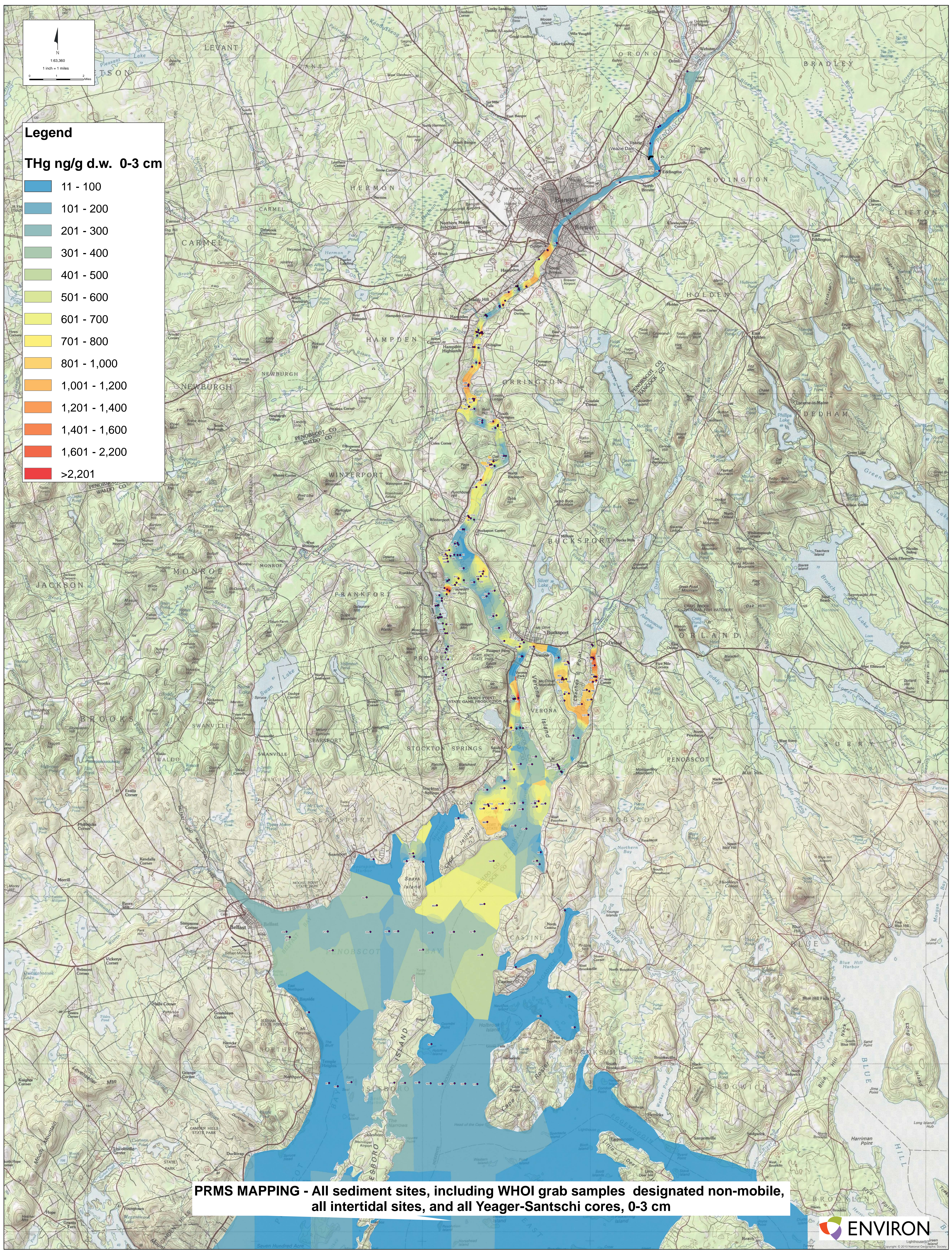
Copyright © 2010, National Geographic Society



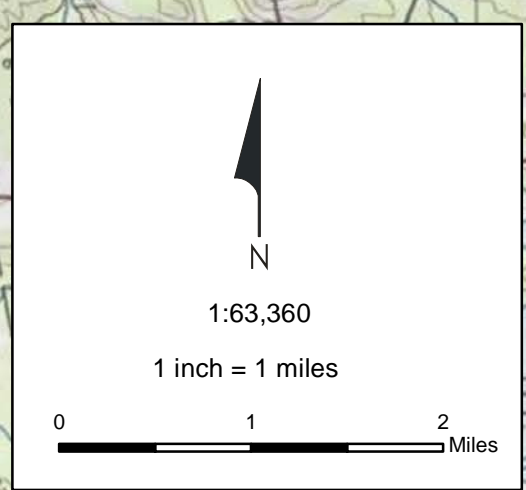
Legend

THg ng/g d.w. 0-3 cm

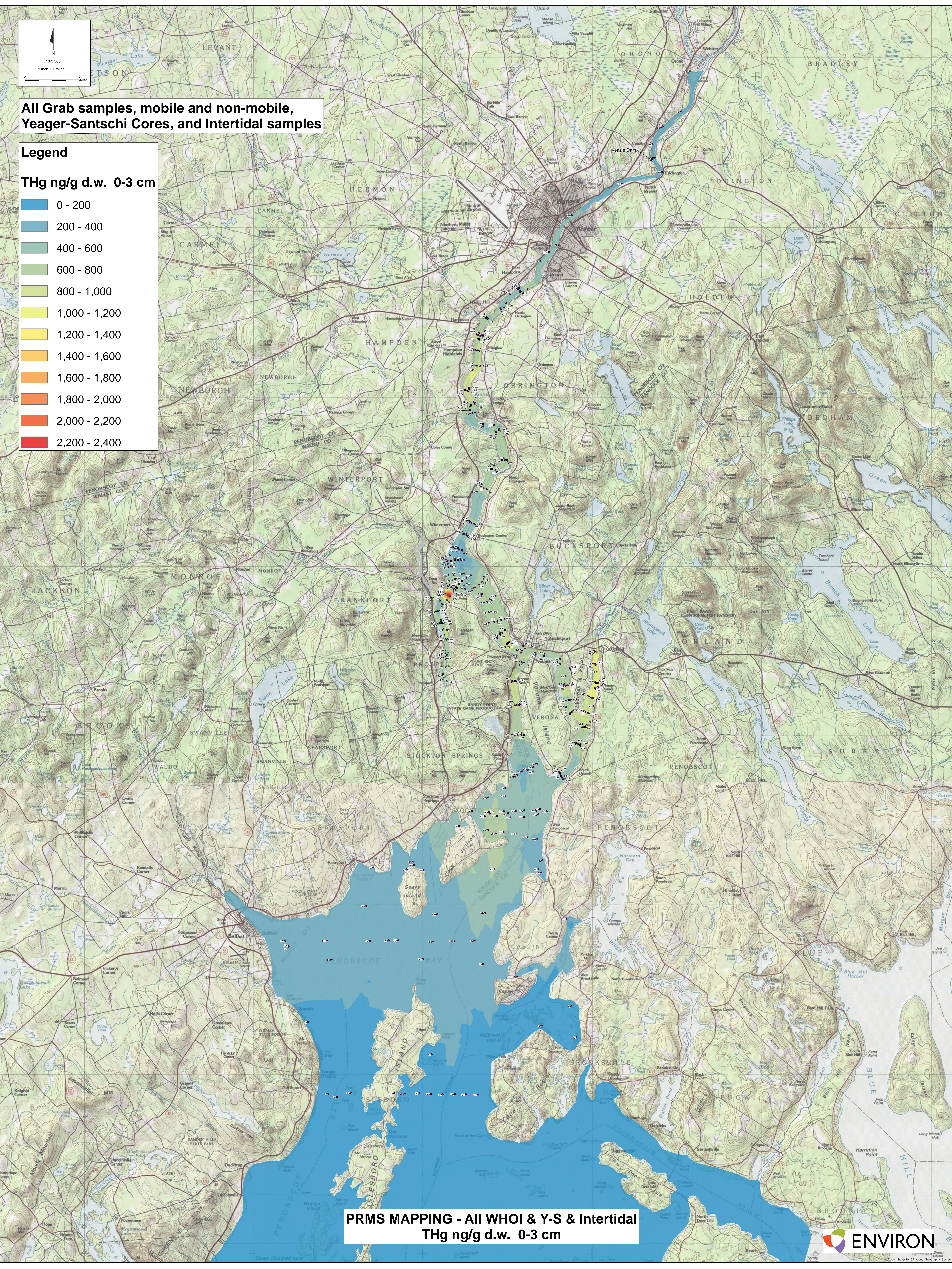
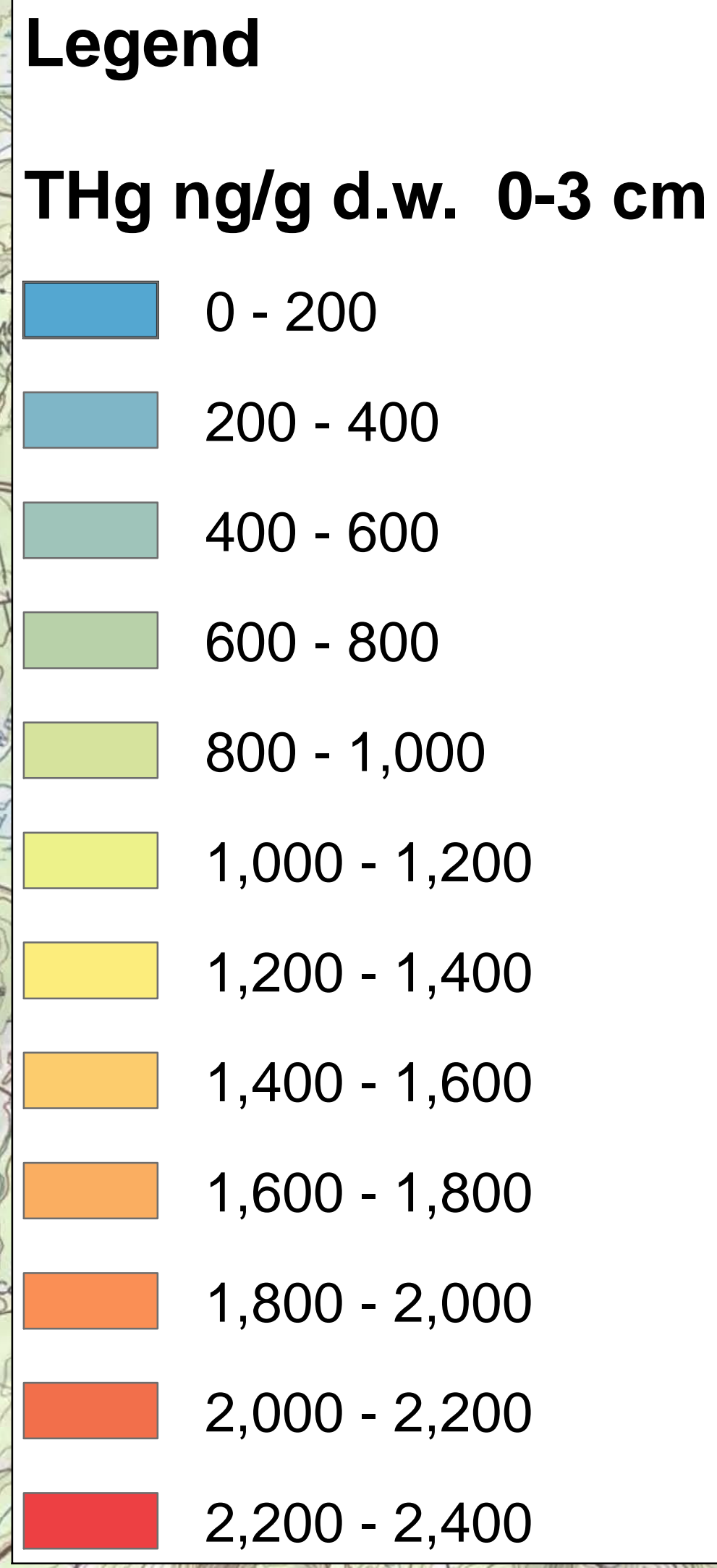
- 11 - 100
- 101 - 200
- 201 - 300
- 301 - 400
- 401 - 500
- 501 - 600
- 601 - 700
- 701 - 800
- 801 - 1,000
- 1,001 - 1,200
- 1,201 - 1,400
- 1,401 - 1,600
- 1,601 - 2,200
- >2,201



PRMS MAPPING - All sediment sites, including WHOI grab samples designated non-mobile, all intertidal sites, and all Yeager-Santschi cores, 0-3 cm



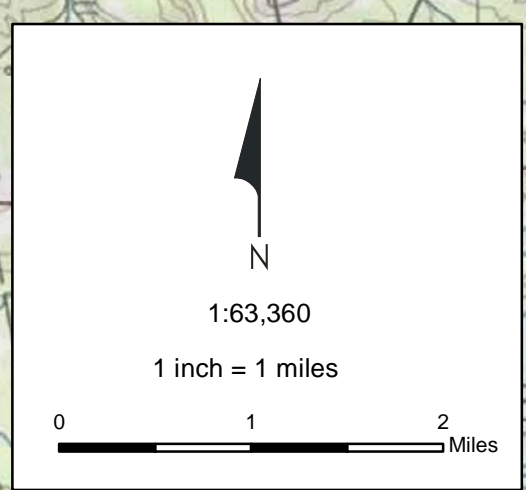
All Grab samples, mobile and non-mobile, Yeager-Santschi Cores, and Intertidal samples



PRMS MAPPING - All WHOI & Y-S & Intertidal THg ng/g d.w. 0-3 cm



Copyright © 2010 National Geographic Society

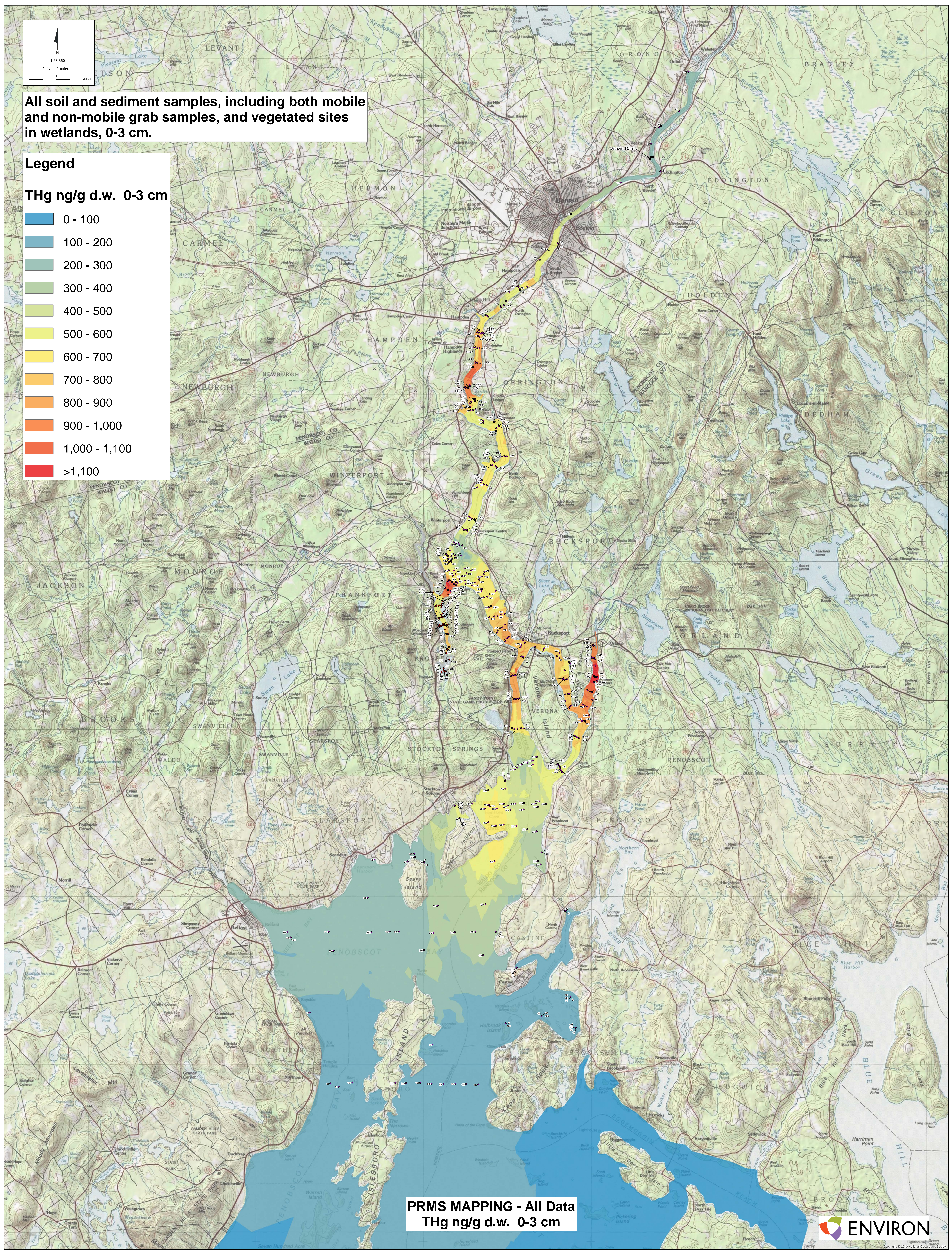


All soil and sediment samples, including both mobile and non-mobile grab samples, and vegetated sites in wetlands, 0-3 cm.

Legend

THg ng/g d.w. 0-3 cm

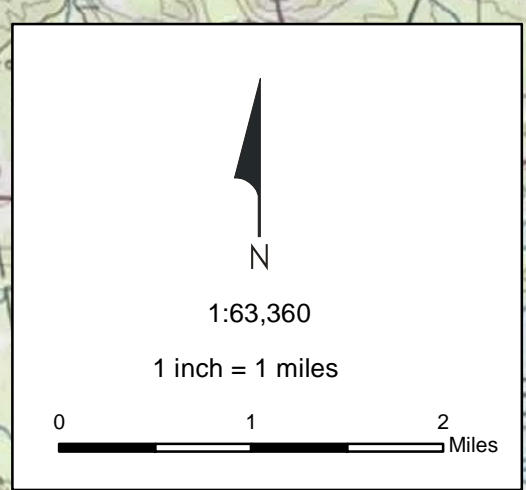
- 0 - 100
- 100 - 200
- 200 - 300
- 300 - 400
- 400 - 500
- 500 - 600
- 600 - 700
- 700 - 800
- 800 - 900
- 900 - 1,000
- 1,000 - 1,100
- >1,100



PRMS MAPPING - All Data
THg ng/g d.w. 0-3 cm

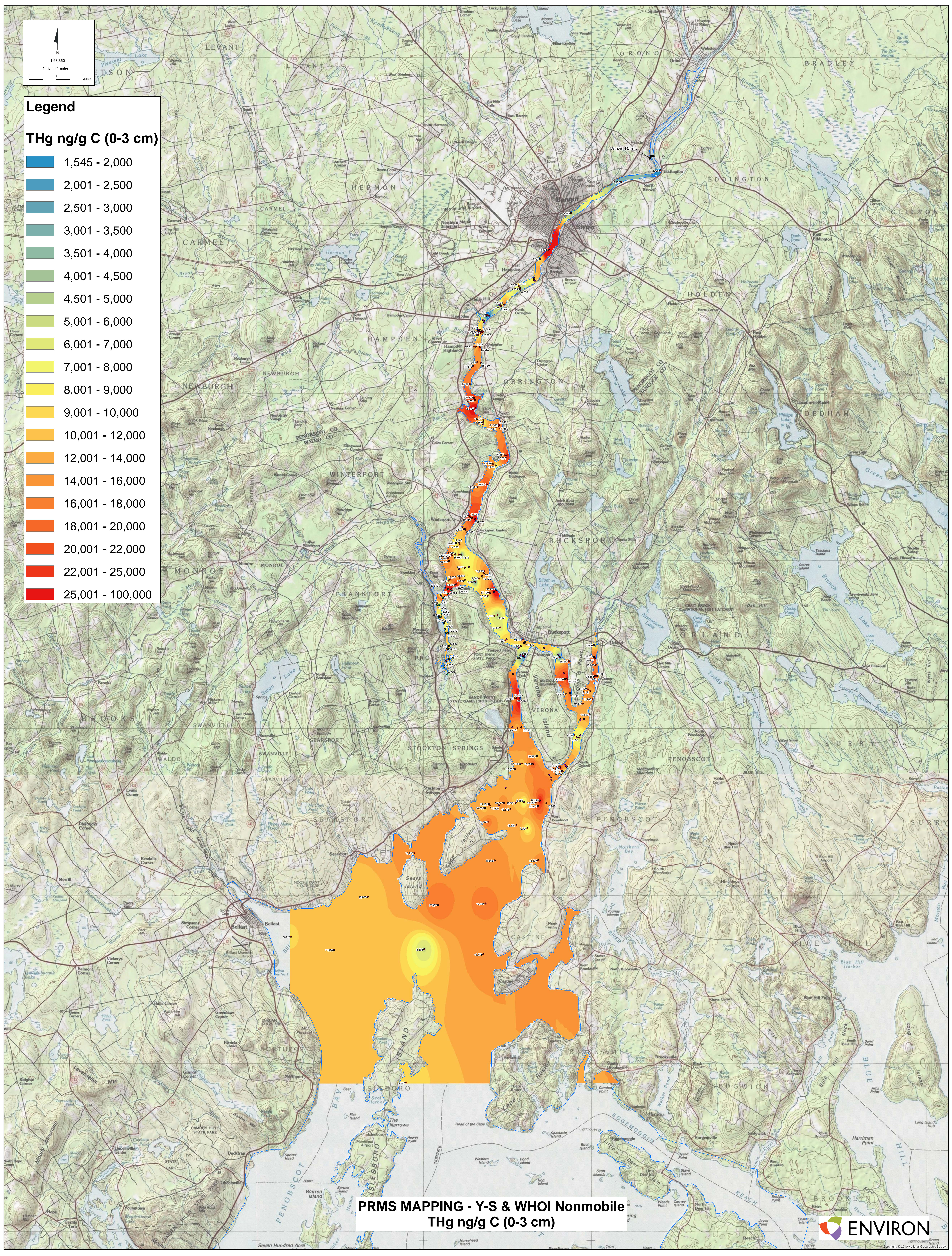
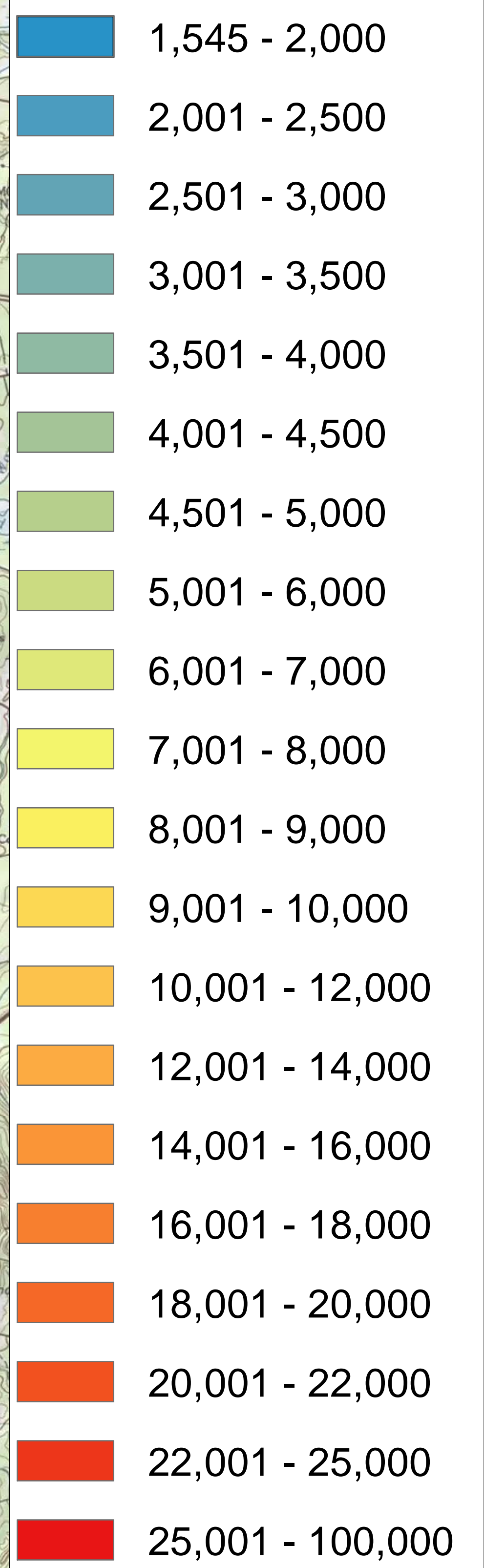


Lighthouse Green
© 2010 National Geographic Society



Legend

THg ng/g C (0-3 cm)



**PRMS MAPPING - Y-S & WHOI Nonmobile
THg ng/g C (0-3 cm)**